

## **Morgan Court, Ashford, TW15 2BY**



**Asking Price £275,000 Leasehold**



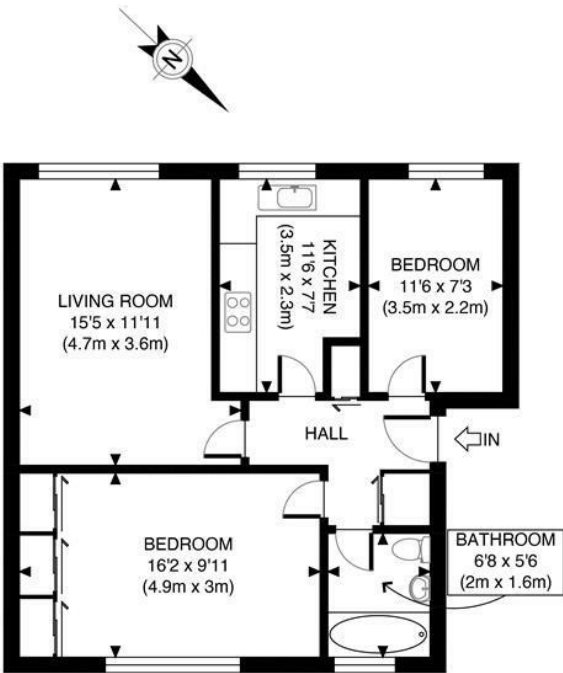
**A pleasant and well located 2-bedroom purpose built top floor flat with large loft storage, garage and residents parking. No Forward Chain.**

FOR SALE

An opportunity to purchase a well presented 2 bedroom purpose built top floor flat with garage and easy access to town centre, station and local shops . This flat features a large lounge/dining room, kitchen, 2 good sized bedrooms and modern bathroom. Large loft area for storage. Long lease and low outgoings. No Forward Chain.

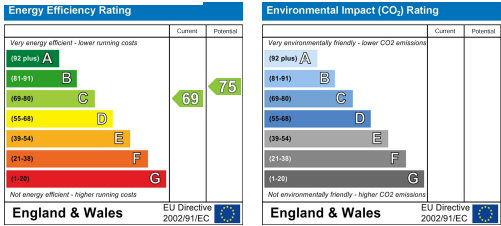
LOCATION

Conveniently placed for Ashford town centre. The popular Sunbury Cross Shopping Centre and access to the M3/M25 motorways are also close to hand.



SECOND FLOOR  
GROSS INTERNAL  
FLOOR AREA 614 SQ FT

APPROX. GROSS INTERNAL FLOOR AREA 614 SQ FT / 57 SQM  Disclaimer: Floor plan measurements are approximate and are for illustrative purposes only. While we do not doubt the floor plan accuracy and completeness, you or your advisors should conduct a careful, independent investigation of the property in respect of monetary valuation	Morgan Court	
	date	19/07/23
	photoplan	



It is our aim to provide particulars that are both accurate and reliable but they are not guaranteed and would not form part of any offer or contract. Please contact us if you require clarification and we would be happy to assist. Please also note that the appliances and heating system have not been tested and therefore, no warranties can be given as to their condition.